

Accessories for pluggable interface relays CR-P, CR-M

Pluggable function module



2CDC2 91 005 S0011

Characteristics

- Pluggable function modules for mounting on logical and standard sockets for interface relays CR-P
- Function modules: Reverse polarity protection/free wheeling diode, LED indication, RC elements, overvoltage protection

Approvals

 UL508, CAN/CSA C22.2 No.14

 EAC

Marks

 CE

Order data

Packing unit = 10 pieces

Diode - Reverse polarity protection

Type	Rated control supply voltage U_s	Version	Order code
CR-P/M 22	6-220 V DC	A1+, A2-	1SVR 405 651 R0000

Diode and LED - Reverse polarity protection

CR-P/M 42	6-24 V DC	red, A1+, A2-	1SVR 405 652 R0000
CR-P/M 42V	6-24 V DC	green, A1+, A2-	1SVR 405 652 R1000
CR-P/M 42B	24-60 V DC	red, A1+, A2-	1SVR 405 652 R4000
CR-P/M 42BV	24-60 V DC	green, A1+, A2-	1SVR 405 652 R4100
CR-P/M 42C	110 V DC	red, A1+, A2-	1SVR 405 652 R9000
CR-P/M 42CV	110 V DC	green, A1+, A2-	1SVR 405 652 R9100

RC element - Arc elimination

CR-P/M 52B	6-24 V AC/DC		1SVR 405 653 R0000
CR-P/M 52D	24-60 V AC/DC		1SVR 405 653 R4000
CR-P/M 52C	110-230 V AC/DC		1SVR 405 653 R1000

Diode and LED

CR-P/M 62	6-24 V AC/DC	red, for DC: A1+, A2-	1SVR 405 654 R0000
CR-P/M 62V	6-24 V AC/DC	green, for DC: A1+, A2-	1SVR 405 654 R1000
CR-P/M 62E	24-60 V AC/DC	red, for DC: A1+, A2-	1SVR 405 654 R4000
CR-P/M 62EV	24-60 V AC/DC	green, for DC: A1+, A2-	1SVR 405 654 R4100
CR-P/M 92	110-230 V AC / 110 V DC	red, for DC: A1+, A2-	1SVR 405 654 R0100
CR-P/M 92V	110-230 V AC / 110 V DC	green, for DC: A1+, A2-	1SVR 405 654 R1100

Varistor and LED - Overvoltage protection

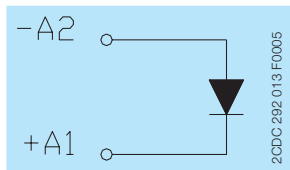
CR-P/M 62C	6-24 V AC/DC	red, for DC: A1+, A2-	1SVR 405 655 R0000
CR-P/M 62CV	6-24 V AC/DC	green, for DC: A1+, A2-	1SVR 405 655 R1000
CR-P/M 62D	24-60 V AC/DC	red, for DC: A1+, A2-	1SVR 405 655 R4000
CR-P/M 62DV	24-60 V AC/DC	green, for DC: A1+, A2-	1SVR 405 655 R4100
CR-P/M 92C	110-230 V AC / 110 V DC	red, for DC: A1+, A2-	1SVR 405 655 R0100
CR-P/M 92CV	110-230 V AC / 110 V DC	green, for DC: A1+, A2-	1SVR 405 655 R1100

Varistor - Overvoltage protection

CR-P/M 72	24 V AC		1SVR 405 656 R0000
CR-P/M 72A	115 V AC		1SVR 405 656 R1000
CR-P/M 82	230 V AC		1SVR 405 656 R2000

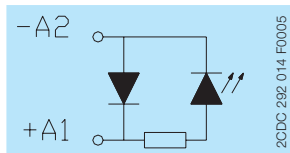
Electrical connection

CR-P/M 22



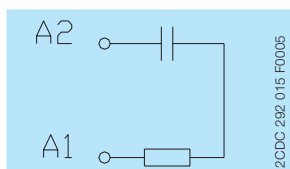
Connection diagram

CR-P/M 42, CR-P/M 42B, CR-P/M 42BV, CR-P/M 42C, CR-P/M 42CV, CR-P/M 42V



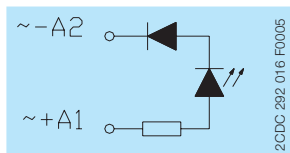
Connection diagram

CR-P/M 52B, CR-P/M 52C, CR-P/M 52D



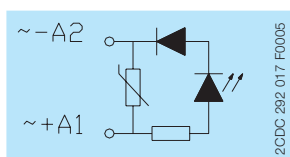
Connection diagram

CR-P/M 62, CR-P/M 62E, CR-P/M 62EV, CR-P/M 62V, CR-P/M 92, CR-P/M 92V



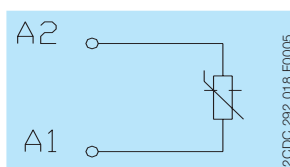
Connection diagram

CR-P/M 62C, CR-P/M 62CV, CR-P/M 62D, CR-P/M 62DV, CR-P/M 92C, CR-P/M 92CV



Connection diagram

CR-P/M 72, CR-P/M 72A, CR-P/M 82



Connection diagram